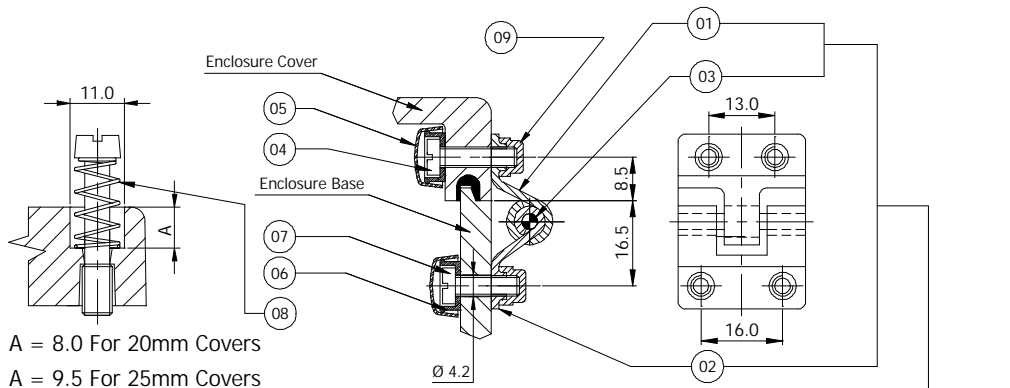


A = 8.0 For 20mm Covers
 A = 9.5 For 25mm Covers

10	EEY00100	Hinge fixing instruction note	1	--
09	EEN03600	Sticker templete for drilling	2	Polyethylene
08	EEN03100	Spring	4	SS-304
07	EXS00201	Std. M4x15 Ch. Hd. Screw	8	SS-304
06	EEN03300	Cup Washer	8	Polypropylene
05	EEN03200	Insulation Cap	8	Polypropylene
04	EXS00101	Std M4 x 3 Nut	8	SS-304
03	EES00101	Spiral Dowel	2	SS-304
02	EEN00600	Bottom Hinge	2	Polyamide
01	EEN00700	Top Hinge	2	Polyamide
Sl.No.	Drg. No	DESCRIPTION	QTY	MATERIAL

HINGE ASSEMBLY KIT - POLYAMIDE
 Drg. No. : EEA00700



A = 8.0 For 20mm Covers
 A = 9.5 For 25mm Covers

11	EEY00100	Hinge fixing instruction note	1	--
10	EEN03600	Sticker templete for drilling	2	Polyethylene
09	EEN05600	Hinge screw outside cap	8	Polypropylene
08	EEN03100	Spring	4	SS-304
07	EXS00205	Std. M4x10 Ch. Hd. Screw	4	SS-304
06	EEN03300	Cup Washer	8	Polypropylene
05	EEN03200	Insulation Cap	8	Polypropylene
04	EXS00206	Std. M4x12 Ch. Hd. Screw	4	Std. SS-304
03	EES00101	Spiral Dowel	2	Std. SS-304
02	EEN04700	Bottom Hinge	2	SS-304
01	EEN04600	Top Hinge	2	SS-304
Sl.No.	Drg. No	DESCRIPTION	QTY	MATERIAL

HINGE ASSEMBLY KIT - SS-304
 Drg. No. : EEA03500